



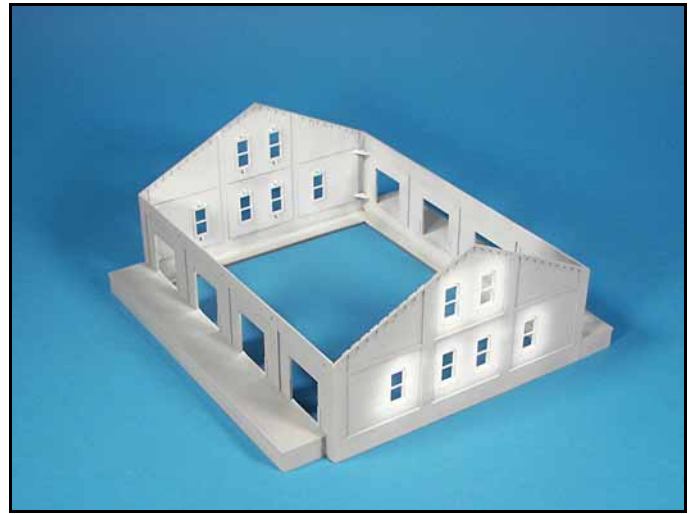
**MIKE ASHEY PRODUCTIONS  
PRESENTS  
MIKE ASHEY'S PAINT LAYERING TECHNIQUE  
FOR  
MODEL RAILROAD STRUCTURES**

Paint layering is essentially a combination of painting, applying masking tape and removing masking tape in sequences as you progress from the lighter colors to the darker colors. I like to use enamel paints because they stick to plastic and to other paint layers better. For my model railroading structures I like to use Floquil enamels. If you are really into building and weathering structures you need to invest in a good airbrush, and a good air supply. If you read through my scale modeling books, I make specific recommendations on both and I also go into a lot of detail on surface and paint preparation and airbrushing techniques. I also like to mix different shades of the base color, some lighter and some darker, so that I can achieve more realistic looking structures.

For masking, I use 3M painters masking tape and for any painting project I use a lot of tape. Sharp demarcation lines between colors can be easily achieved with masking tape edges that are cut with a sharp X-Acto blade, carefully placed and pressed down along the edges so that there is no paint bleeding under the tapes surface. To cut tape, I lay two lengths one over the other, cut strips with a sharp number 11X-Acto blade and a metal straight edge and peel off the top layer for use.



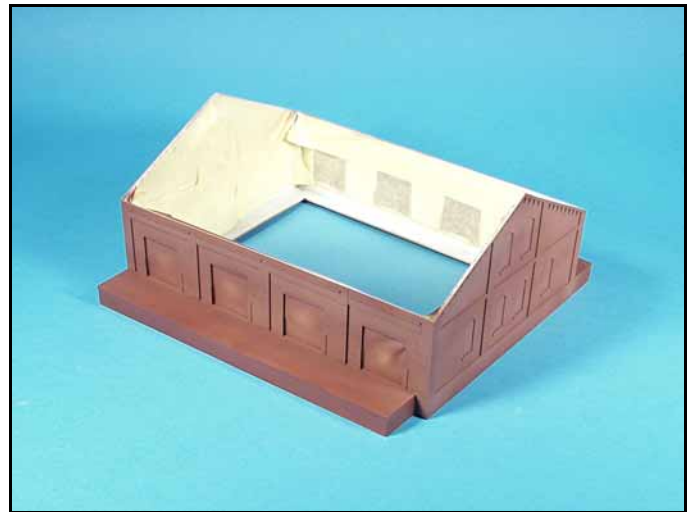
I like to mix my paint colors in Badger airbrush 3/4 ounce paint jars. The paint colors are labeled and I sometimes add notes to the labels so that I know which parts and surfaces were painted a specific color.



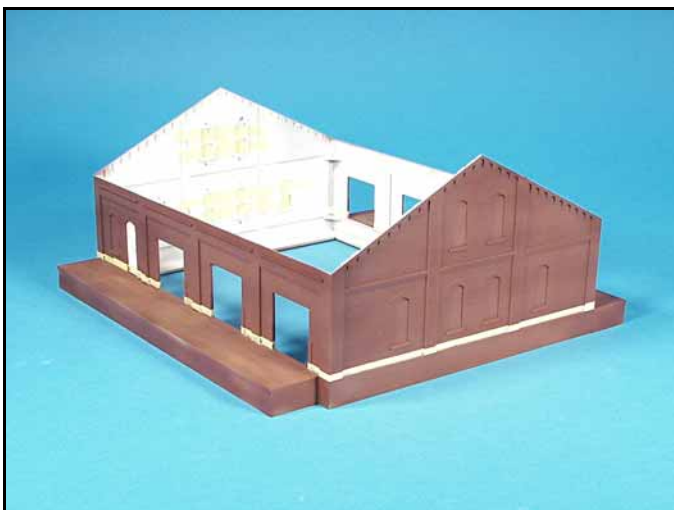
As a general rule I start with the light colors and work into the darker ones. Everything is always primed first. As the first step in paint layering for this model, I added several coats of white to the window frames.



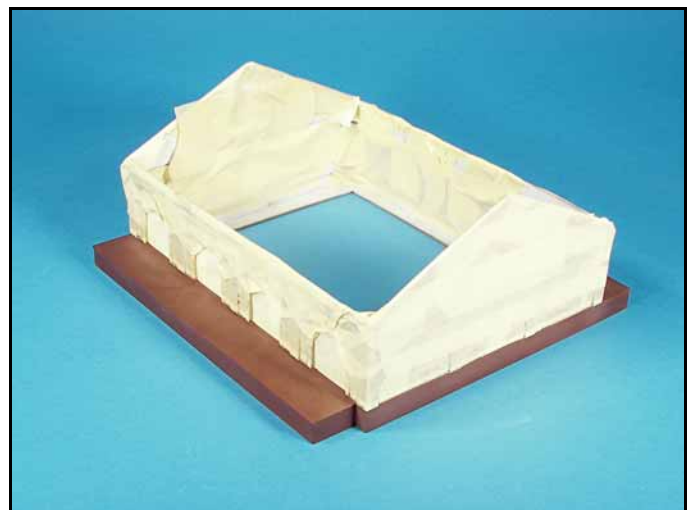
I carefully measured index paper cutouts for the window frames. To secure the cutouts in place I taped them from the backside. The entire interior was also masked.



I airbrushed two coats of Floquil Tuscan red and then I over sprayed it with the same color lightened with Floquil flat white. This provided a subtle two shade effect to the brick surface.



Next the brick surface was masked. I used thin strips of masking tape to outline the brick surface. To get sharp demarcation lines between colors be sure to use masking tapes edges that have been cut with a sharp blade.



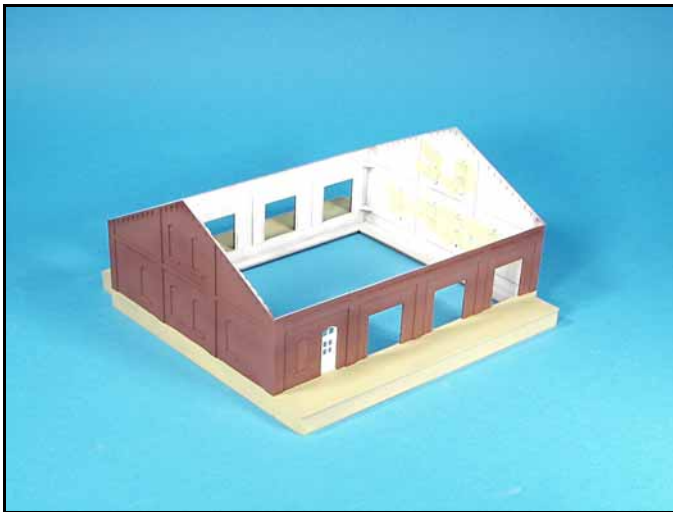
Once the brick outline was masked the entire brick surface was covered with masking tape.



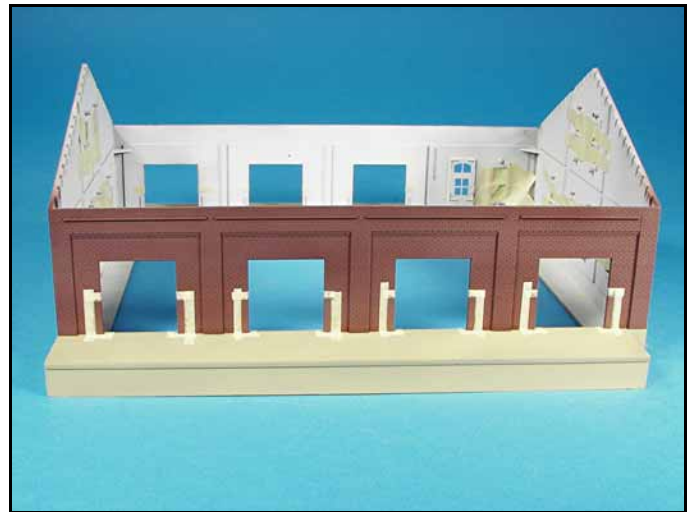
I like to restore all surfaces to the primer color before applying the finished coats of paint. Airbrushing applies very thin coats of paint so there is no chance that surface detail will be covered up.



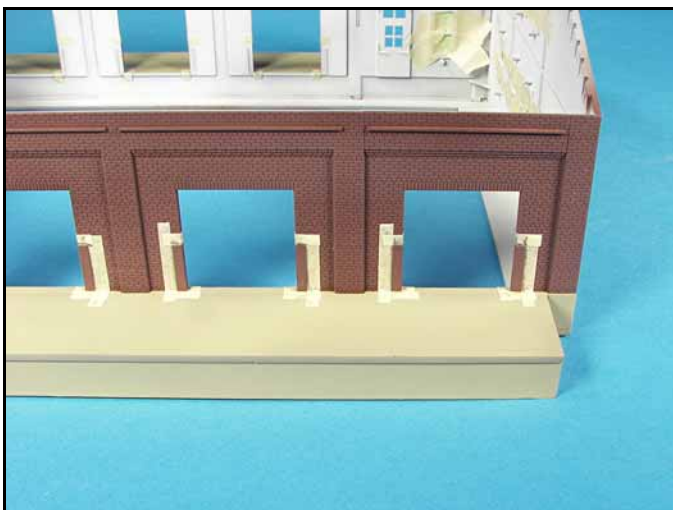
I applied two coats of Floquil concrete and then applied two coats of Floquil aged concrete. During the weathering process I will lightly run 0000 steel wool over the surface to give the concrete a subtle two color appearance.



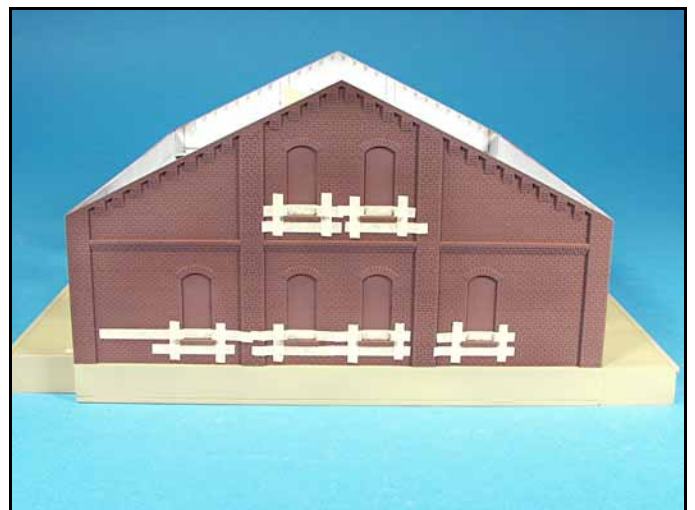
All the tape was removed to prepare for the next step of masking the steel protectors on the sides of the bay door openings and the concrete window sills.



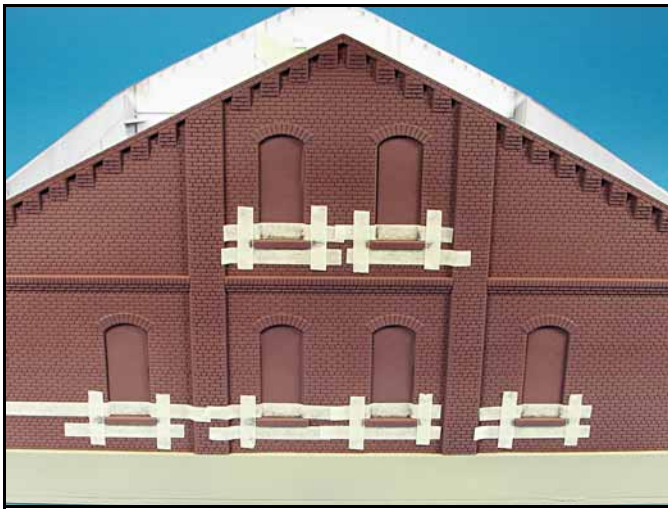
Here again I used small strips of masking tape to outline the steel protectors. To get thin strips, I lay two lengths of tape one over the other, cut lengths with a sharp X-Acto blade and a metal straight edge and peel off the top layer for use.



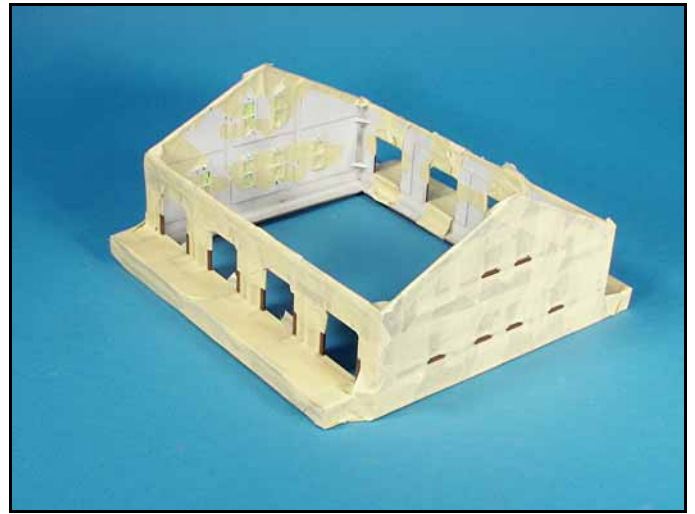
This close up shows how the thin strips of tape were added. I applied the top and bottom strips first and then I added the vertical strips.



Masking around each window sill was a bit time consuming. I first applied strips to the sides and then added the top strip and then the bottom. The tape was tapped down along the edges with the tip of a pencil.



In this close up you can see how the tape was carefully applied along the edges of the window sills. Careful masking will give you great results and sharp lines between colors.



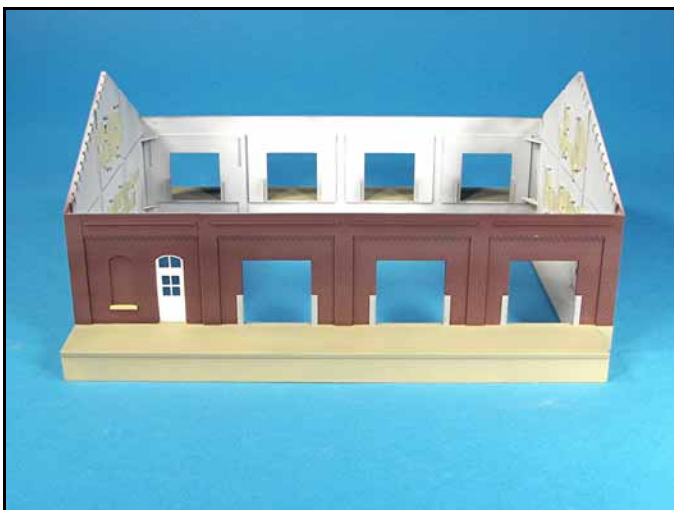
Once the masking around the edges was completed I covered the surfaces with masking tape. I like to use enamels because sometimes water based paints will not adhere properly resulting in the tape sometimes removing paint layers.



Careful airbrushing allowed me to paint the steel protectors on the bay door openings gray and the window sills Folquill aged concrete during the same airbrush session.



Now that all the tape has been removed you can see how good masking with sharp edges applied carefully results in sharp demarcation lines between colors.



All that's left to do is remove the window cutouts, do a little bit of touchup on the window frames and then weather and assemble the model.



The model was weathered using pastel pencil dust. To seal the dust I applied a coat of Floquil clear flat.